

WONE & MINIWONE

Natural refrigerants R 290 & R600a

HT from 2 °C to 20 °C

MT from -15 °C to 2 °C

LT from -35 °C to -15 °C

Cooling capacity range

from 3 kW to 250 kW (*)

Heating temperature

regimes up to 90 °C

High temperature heating

capacity up to 200 kW (**)

(*) Evaporator inlet/outlet
water 12/7 °C

(**) Condenser inlet/
outlet water 35/75 °C



FRIGOPLUS

■ ■ ■ NATURAL COOLING & HEATING

R 290 & R 600a

WONE & MINIWONE

WATER COOLED CHILLERS

Water cooled chillers are used for indirect cooling for air conditioning of buildings, industrial processes, logistics centers for food retail, precision cooling of data centers. Heat transfer fluid can be water, mixture of water and ethylene/propylene glycol or some other secondary heat transfer fluid. Refrigerant is propane (R 290), which due to its excellent thermodynamic properties allows the use of the chiller in the temperature range from -35 to 20 °C.

HIGH TEMPERATURE HEAT PUMPS

Iso-butane (R 600a) refrigerant enables very high temperature applications (up to 90 °C) for this type of units. High temperature heat pumps are very suitable for peak loads of district heating systems and for heating of the buildings, also for industrial processes where waste heat must be raised to higher energy levels. If temperatures that need to be reached for heating are lower, it is recommended to use propane (R 290) water - water heat pumps for better efficiency and smaller footprint.

WONE & MINIWONE

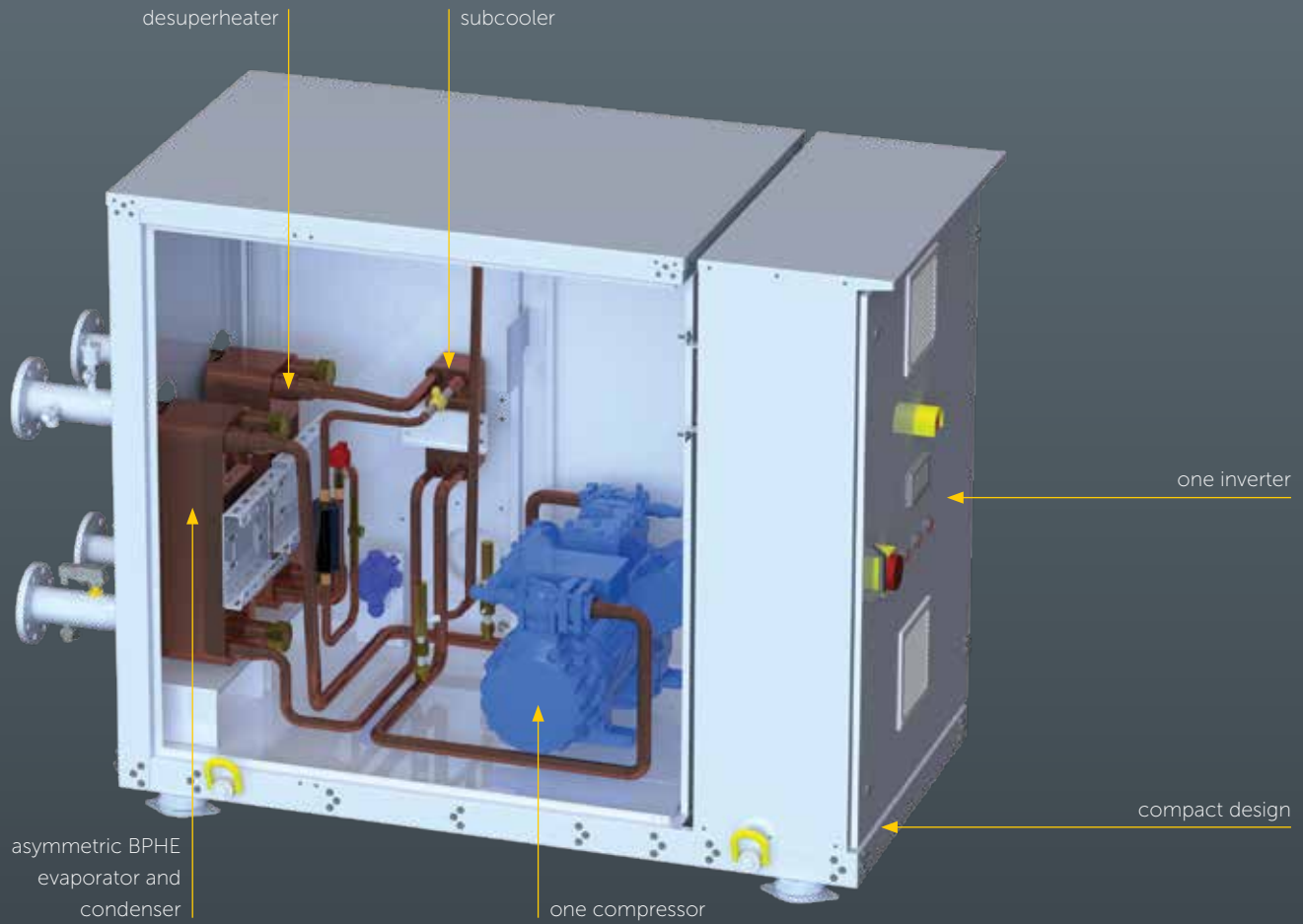
- Wone & MiniWone units are packaged in compact housing and all of the components of the refrigerant circuits are built into the unit.
- Units can easily be stacked (great flexibility of the capacity).
- Small footprint ensures that units can be installed in every machine room (up to 1100 mm unit width).
- Units can be made for outside installation.
- A microprocessor controls the operation of the unit in combination with optimized parameters in order to achieve as high efficiency as possible.
- Frigo Plus has designed special hydromodules which perfectly fit with Wone & MiniWone chiller dimensions for confined machine rooms. Hydro modules may have buffer tank / hydraulic switch up to 800 l in combination with single or parallel primary or secondary pumps.

FRIGOPLUS

■ ■ ■ NATURAL COOLING & HEATING

WONE

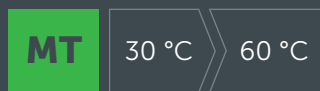
R290 R600a



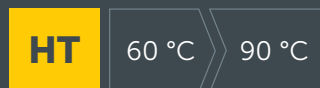
R 290 COOLING TEMPERATURE RANGE



R 290 HEATING TEMPERATURE RANGE



R 600a HEATING TEMPERATURE RANGE



COOLING CAPACITY RANGE

3 kW - 250 kW (*)

(*) Evaporator inlet/outlet water 12/7 °C

HIGH TEMPERATURE HEATING CAPACITY

UP TO 200 kW (**)

(**) Condenser inlet/outlet water 35/75 °C

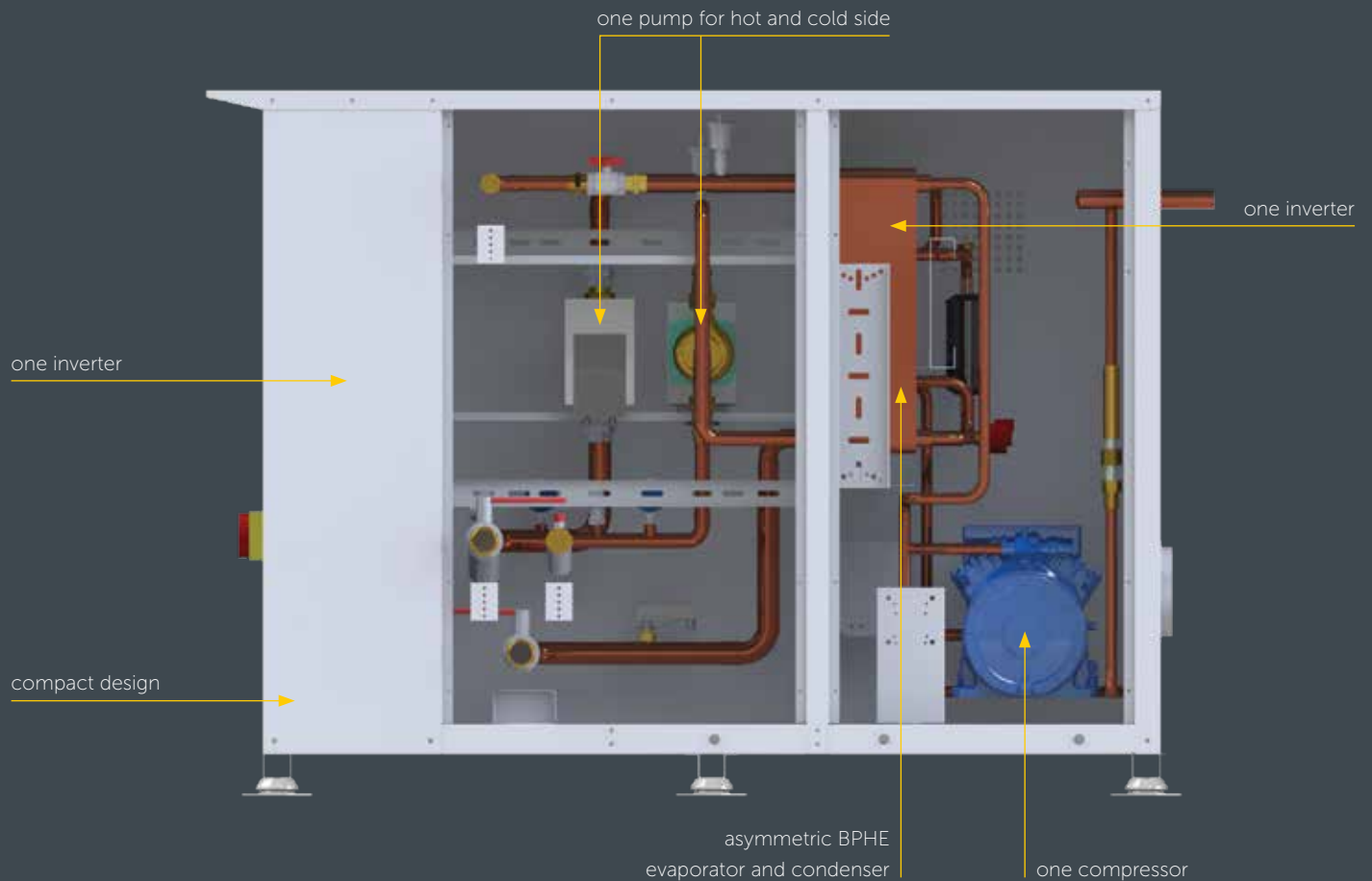
COMBINATIONS

| | | COMPRESSORS | INVERTERS | 1 x pump cold side | 2 x pump hot side | desuperheater |
|----------|---------------------|-------------|-----------|--------------------|-------------------|---------------|
| WONE | without buffer tank | 1 | 0 - 1 | ✗ | ✗ | ✓ |
| MINIWONE | | 1 | 0 - 1 | ✓ | ✓ | ✗ |

MINIWONE

R290

R600a



- Natural refrigerants
- Semi-hermetic reciprocating compressors
- Inverter driven compressors
- High efficiency asymmetric evaporators and condensers
- Electronic expansion valve
- Innovative technical cooling solution for high energy efficiency
- **R 600a** - for high temperature hot water applications

CONTROLLER by **SIEMENS**

SIEMENS
CLOUD MONITORING



CUSTOMER

FRIGOPLUS

- Intuitive and user friendly TOUCH SCREEN
- Innovative algorithm for precise control of outlet water/glycol temperature
- Advanced operation control for 'heat recovery' and precise outlet hot water temperature
- Alarm management for safe and reliable chiller operation
- Easy connectivity with standard MODBUS and BacNET protocols



Producing natural cooling and heating systems since 2002.

FRIGOPLUS

■ ■ ■ NATURAL COOLING & HEATING

Frigo Plus d.o.o.

Address:

Prepuštovečka ulica 19, Soblinec

HR-10 360 Sesvete, Croatia

Tel.: +385 1 202 00 10

Fax: +385 1 200 38 01

www.frigo-plus.hr

