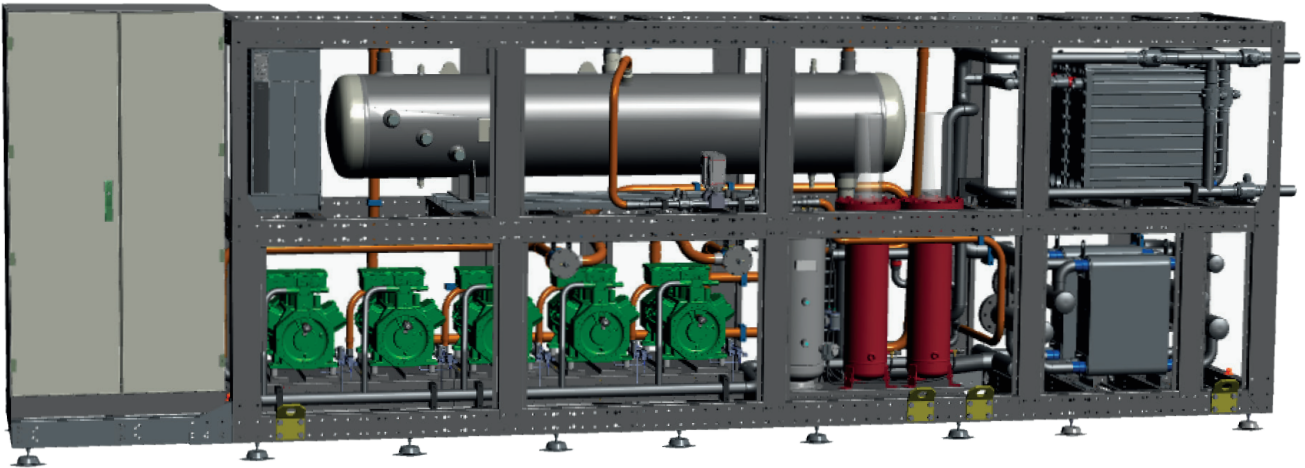


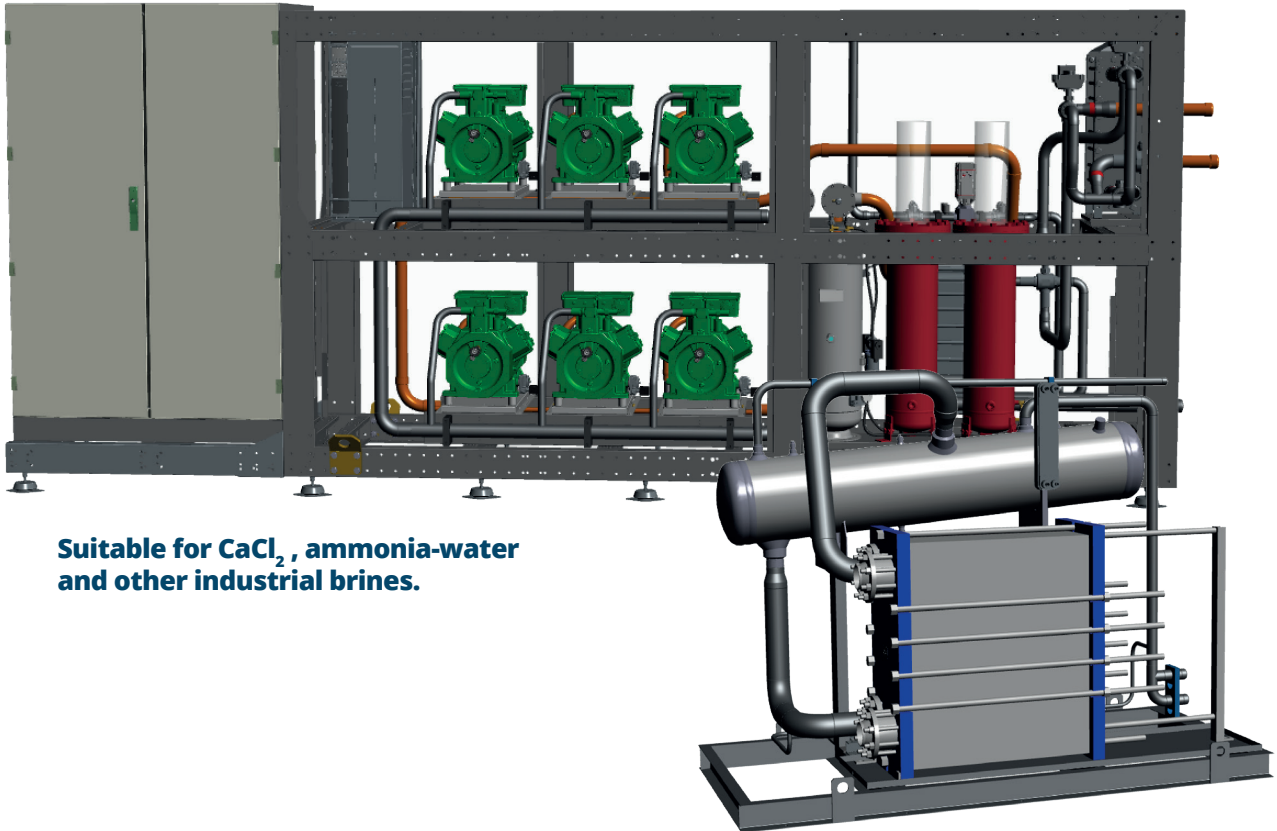
# Sustainable Cold Solutions | CO<sub>2</sub> chillers



Suitable for Glycols and non corrosive brines.

Model	#Compressor Nc	Electrical Data			Performance Data		
		I max	P max	Q0	Propylene Glycol	flow	DP
		comp. pack	comp. pack	kW	38%	m3/h	kPa
		A	kW	-11/+37°C (92bar)			
<b>MWT 2x178 CMT</b>	2	118,0	69,0	73,0	-4 / -8°C	17,2	68,5
<b>MWT 2x260 CMT</b>	2	192,0	103,0	110,0	-4 / -8°C	26,2	68,2
<b>MWT 2x300 CMT</b>	2	196,0	109,0	128,0	-4 / -8°C	29,7	145
<b>MWT 3x260 CMT</b>	3	288,0	154,0	160,0	-4 / -8°C	36,6	92
<b>MWT 3x300 CMT</b>	3	294,0	163,0	185,0	-4 / -8°C	42,3	68
<b>MWT 300+2x380 CMT</b>	3	296,0	160,0	215,0	-4 / -8°C	49,2	71
<b>MWT 4x300 CMT</b>	4	392,0	217,2	242,0	-4 / -8°C	54,9	66,7
<b>MWT 300+3x380 CMT</b>	4	394,7	214,0	285,0	-4 / -8°C	65,15	63
<b>MWT 300+4x380 CMT</b>	5	493,6	268,0	358,0	-4 / -8°C	81,4	64,4
<b>MWT 300+5x380 CMT</b>	6	592,5	320,3	425,0	-4 / -8°C	97,15	70

# Sustainable Cold Solutions | CO<sub>2</sub> chillers



Suitable for CaCl<sub>2</sub>, ammonia-water and other industrial brines.

Model	#Compressor Nc	Electrical Data			Performance Data		
		I max comp. pack A	P max comp. pack kW	Q0 kW -14/+33°C (85bar)	CaCl <sub>2</sub> 25% flow m3/h	DP kPa	
MWT3x380IMT	3	288,0	160,0	229,2	-8 / -11°C	78,3	34
MWT260+3x380IMT	4	384,0	211,0	272,0	-8 / -11°C	91,9	39
MWT4x380IMT	4	396,0	218,0	303,0	-8 / -11°C	102,0	44
MWT260+4x380IMT	5	480,0	266,0	351,0	-8 / -11°C	119,1	52
MWT5x380IMT	5	480,0	266,0	377,0	-8 / -11°C	127,8	58
MWT6x380IMT	6	576,0	319,0	451,0	-8 / -11°C	153,3	75